

Mid Power Multi Series

2 x 300Watt +1 x 500Watt 3 Ohm Class D Audio Amplifier Board - T-AMP (AA-AB33511)



Key Features:

- Output Power
500W@30Ohm 50V DC THD+N 10%
312W@30Ohm 50V DC THD+N 1%
- Clip Indicator
- Temperature Control Fan
- Overcurrent Protection
- Overtemperature Protection
- Optimized Heatsink Design
- 4-screw Easy Installation
- Weight: 680g/1.50 lbs (±10%)
- Size: 6.00inchX4.50inchX1.48inch

Distributors:



All these boards are per-tested with our power supply solution to comply with FCC and CE. For all customers who need those information, please contact our distributor or Sure Electronics. RoHS compliant will need an MOQ of 1000pcs per order.

Ready for:



Contact info

• Email:
info@sure-electronics.com



Electrical Specifications

Specifications typical @ +25°C, powered by 50V DC, unless otherwise noted. Specifications subject to change without notice.

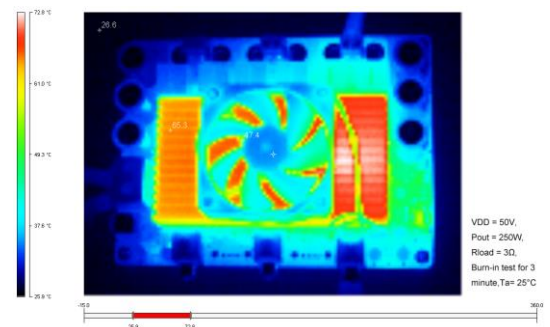
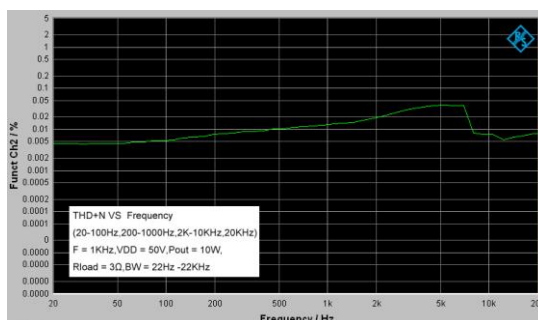
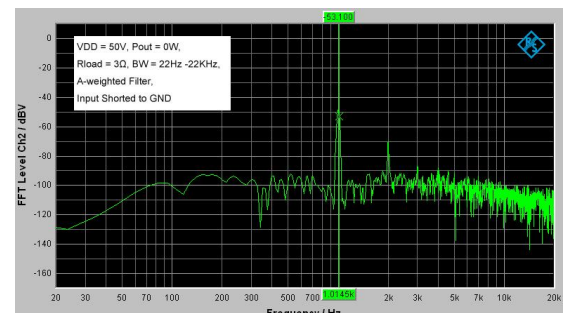
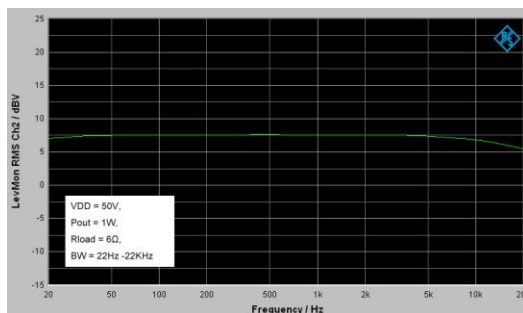
Parameter	Conditions	Min.	Typ.	Max.	Units
Power Supply	-	24	50	-	VDC
Idle Power	SD Floating, FAN ON	-	20	25	W
	SD Floating, FAN OFF	-	16.5	18	W
Standby Power	SD Connected to GND, FAN OFF	-	1	3	W
Maximum Current	600W @ 30Ohm	-	12.6	-	A
Efficiency	500W @ 30Ohm	92	-	97	%
Minimum Load Impedance	-	-	2.5	-	Ω
Switching Frequency	SD Floating	-	660	-	KHz
Fan Active @ Temperature	-	-	50	-	°C

Audio Performance

Specifications typical @ +25°C, powered by 50V DC, unless otherwise noted. Specifications subject to change without notice.

Parameter	Conditions	Min.	Typ.	Max.	Units
Gain	-	28.5	30.5	32.5	dB
Input Sensitivity(RMS)	@3Ω, 500W, 1KHz	-	0.876/1.44	-	V
Input Impedance	-	-	33	-	KΩ
Output Power	@3Ω THD+N 1%	-	312	-	W
	@3Ω THD+N 10%	-	500	-	W
Bandwidth @ ±3dB	@3Ω	20	-	20K	Hz
THD	@3Ω, 1W, 1KHz	-	0.011	-	%
	@3Ω, 10W, 1KHz	-	0.01	-	%
Output Noise Level	A-weighting, Input Connected to GND	-	224	-	μV
SNR	312W @3Ω THD+N 1%	-	91	-	dB

Typical Performance Graphs



All parameters were tested with Rohde & Schwarz UPV audio analyzer (AES17 filter enabled) and Audio Precision AUX0025 filter. For authorized distributors and OEM customers who need more detailed performance graphs and parameter settings, please send an inquiry e-mail to us. (Not available for retail customers)

Model Selection Guide

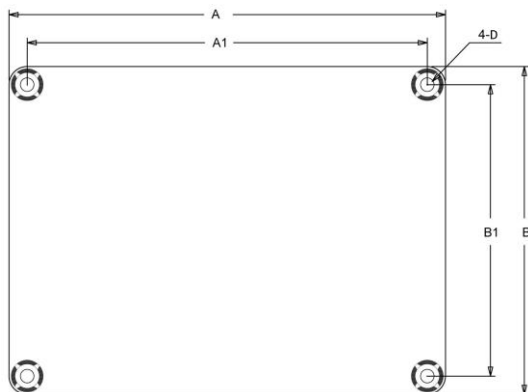
Model Number	Output Power	Power Supply Range	Typical Load	Amplifier IC	Dimensions
AA-AB35191	3 X 300Watt	DC 24-40V	3Ω	T-AMP	6"X4.5"
AA-AB35311	3 X 400Watt	DC 24-46V	3Ω	T-AMP	6"X4.5"
AA-AB35511	3 X 500Watt	DC 24-50V	3Ω	T-AMP	6"X4.5"
AA-AB33312	2 X 200Watt+1 X 400Watt	DC 24-46V	3Ω	T-AMP	6"X4.5"
AA-AB33511	2 X 300Watt+1 X 500Watt	DC 24-50V	3Ω	T-AMP	6"X4.5"

Notes:

- The output power is rated at the condition THD+N 10%, 1kHz sine wave.
- All amplifier boards don't employ power supply reverse polarity protection. Stresses beyond the power supply range maximum ratings may cause permanent damage.
- None typical load may cause rating power reduction.
- Dimensions mean length and width of PCB only, excluding excessive part out of the PCB outline.
- All parameters were tested with Rohde & Schwarz UPV audio analyzer (AES17 filter enabled) and AP AUX0025 filter. Linear Power Supply units were used for testing.
- Sure Electronics promises all standard products life cycle more than 5 years. Sure Electronics reserves the right to update the version without notice. All the products sent to retail customers are the latest version. We will provide back-to-order service (100 Pieces MOQ needed) for our distributors in 5 years.
- Suggested power supply solution:
Mean Well MW 48V 20.8A 1000W AC/DC Switching Power Supply SE-1000-48 UL/CUL (PS-SP11192)

If you have other power supply requirements, please feel free to contact us.

Mechanical Dimensions

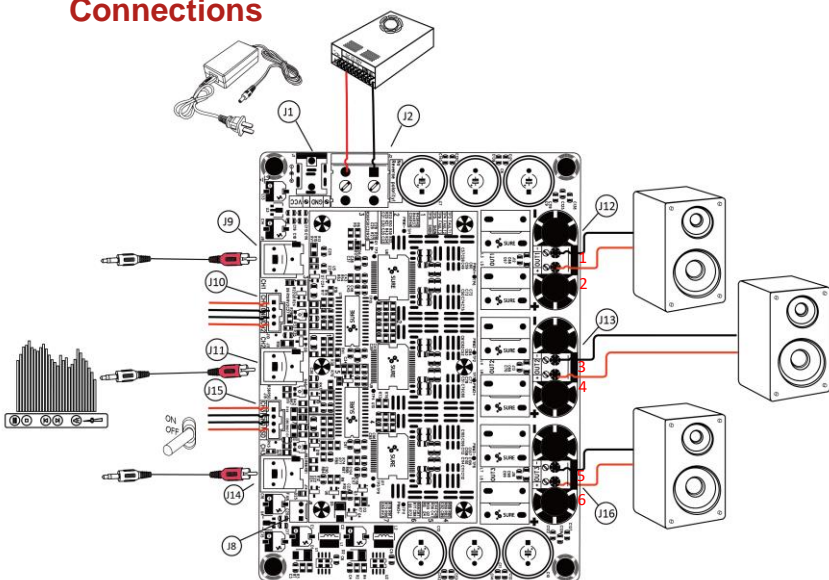


Dimensions	A (inch/mm)	A1 (inch/mm)	B (inch/mm)	B1 (inch/mm)	D (inch/mm)
	6.00/152.40	5.60/142.24	4.50/114.3	4.10/104.14	0.15/3.8

Notes:

- All dimensions are typical in inches/mm
- Tolerance x.xx = ±0.02(±0.50)
- Height: 1.48inch/37.60mm

Connections



Power Supply Connector:

- J1 DC Jack 5.5mm/2.5mm
- J2 Terminal Block RJ128 (optional)

Pin	Function
■	GND
●	VCC

Speaker Output Connector:

- J12, J13, J16 Terminal Block RJ128

Pin	Function
1	OUT1 -
2	OUT1 +
3	OUT2 -
4	OUT2 +
5	OUT3 -
6	OUT3 +

Fan Control Connector:

- J8 2510 3pin

Audio Input Connector:

- J9, J11, J14 RCA Jack
- J10, J15 Fastfit JR Header (optional)

Pin	Function
■	CH1
●	GND
●	GND
●	CH2

J15

Pin	Function
■	CH3
●	GND
●	GND
●	SD



Sure Electronics

Make Your Audio Application Simple!

NO.9, Weidi Road, Xianlin University City, Qixia District,
Nanjing, Jiangsu Province, P.R.C

www.sure-electronics.com

www.wondom.com

Mail: store@sure-electronics.com

Skype: surewebstore